

# 定制帘技术手册

Custom made Venetian Blinds

Technical Manual

华升实业

HUASHENG INDUSTRY

# 目录 Contents

定制帘技术手册 .....	1
目录 Contents .....	2
定制百叶帘系统类别 Custom made blinds system type .....	3
木质定制百叶帘颜色 Custom made Wood blinds Color Collection .....	5
木质定制帘封板类型 Custom made Wood blinds Valance system .....	6
木质定制帘下轨类型 Custom made Wood blinds Bottom system .....	6
50mm 上轨颜色 10 个 Wood blinds 50mm high headrail color 10 PCS .....	7
普通梯带常规颜色 19 个 Ladder string color 19 PCS .....	9
宽布梯带颜色 27 个 25mm Ladder string color 27 PCS .....	10
拉绳常规颜色 17 个 Pull cord color 17 PCS .....	11
拉绳分离器常规颜色 8 个 Cord release device color 8 PCS .....	13
拉环/下扣颜色 26 个(匹配叶片颜色) Tassel & button color 26 PCS (match slats) .....	13
木质定制百叶帘制规 Customized Wood blinds Regulations .....	17
拉绳系统 Cord system .....	22
转棒拉绳系统 Wand Cord system .....	24
边孔系统 Side hole system .....	25
无拉系统 Cordless system .....	26
循环系统 Chain system .....	27
电动系统 Motor system .....	30
PVC 定制帘 Customized PVC blinds .....	33
五金包 Hardware bag .....	35
运输包装 Transport packaging .....	36
下单表格 Order Form .....	38
生产特别注意事项 Special notice for Production .....	39
交期 Lead Time .....	39
质保 Warranty .....	40
Find Us .....	42

## 定制百叶帘系统类别 Custom made blinds system type

### 定制帘样品盒 Custom made blinds color sample



桐木 Paulownia	边孔系统 Side hole system
	拉绳系统 Cord system
	无拉系统 Cordless system
	循环拉珠系统 Chain system
	电动系统 Dooya/A-OK Motor system
PVC	拉绳系统 Cord system
	无拉系统 Cordless system

# 木质定制百叶帘颜色 Custom made Wood blinds Color Collection

木质定制帘叶片常规颜色 26 个颜色 50mm/63mm  
 Custom made Wood blinds Color 26 PCS 50mm/63mm




覆盖色 Painted Color	染色 Stained Color	印刷色 Printed Color
W190	W868 50mm	W19301 50mm
W405 50mm	W891 50mm	W19302 50mm
W19101 50mm	W893 50mm	W19303 50mm
W19102 50mm	W19201 50mm	W19304 50mm
W19103 50mm	W19202 50mm	拉丝色 Brushed Color
W19104 50mm	W19203 50mm	W19401 50mm
W19105 50mm	W19204 50mm	W19402 50mm
W920 50mm	W19205 50mm	W19403 50mm
	GW-002 50mm	W19404 50mm
	HS-010 50mm	



## 木质定制帘封板类型 Custom made Wood blinds Valance system

		
平面封板 Flat Valance	D 型封板 D Valance	B 型封板 B Valance
覆盖色/染色/印刷/拉丝 Painted/Stained/Printed/Brushed	覆盖色/染色 Painted/Stained	覆盖色/染色 Painted/Stained

## 木质定制帘下轨类型 Custom made Wood blinds Bottom system

		
T 型下轨 T Bottom	工型下轨 H Bottom	方型下轨 Square Bottom
覆盖色/染色/印刷/拉丝 Painted/Stained/Printed/Brushed	覆盖色/染色/印刷/拉丝 Painted/Stained/Printed/Brushed	覆盖色/染色/印刷/拉丝 Painted/Stained/Printed/Brushed

※封板下轨全部匹配叶片颜色

※Valance & Bottom all match slats color

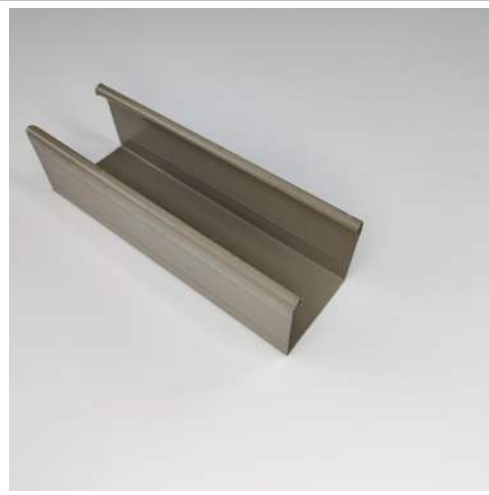
50mm 上轨颜色 10 个 Wood blinds 50mm high headrail color 10 PCS



W190



W405



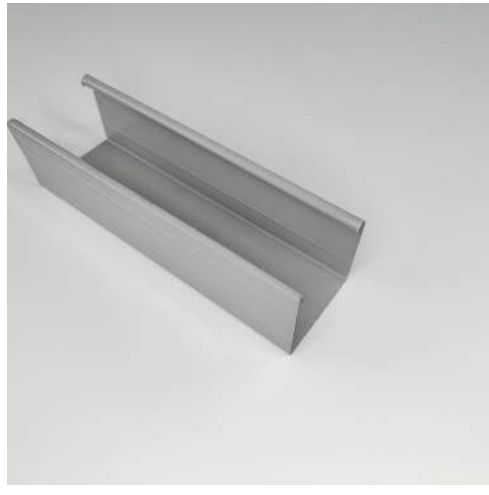
GW002



HS010



RAL9022



TS38



W868



W891



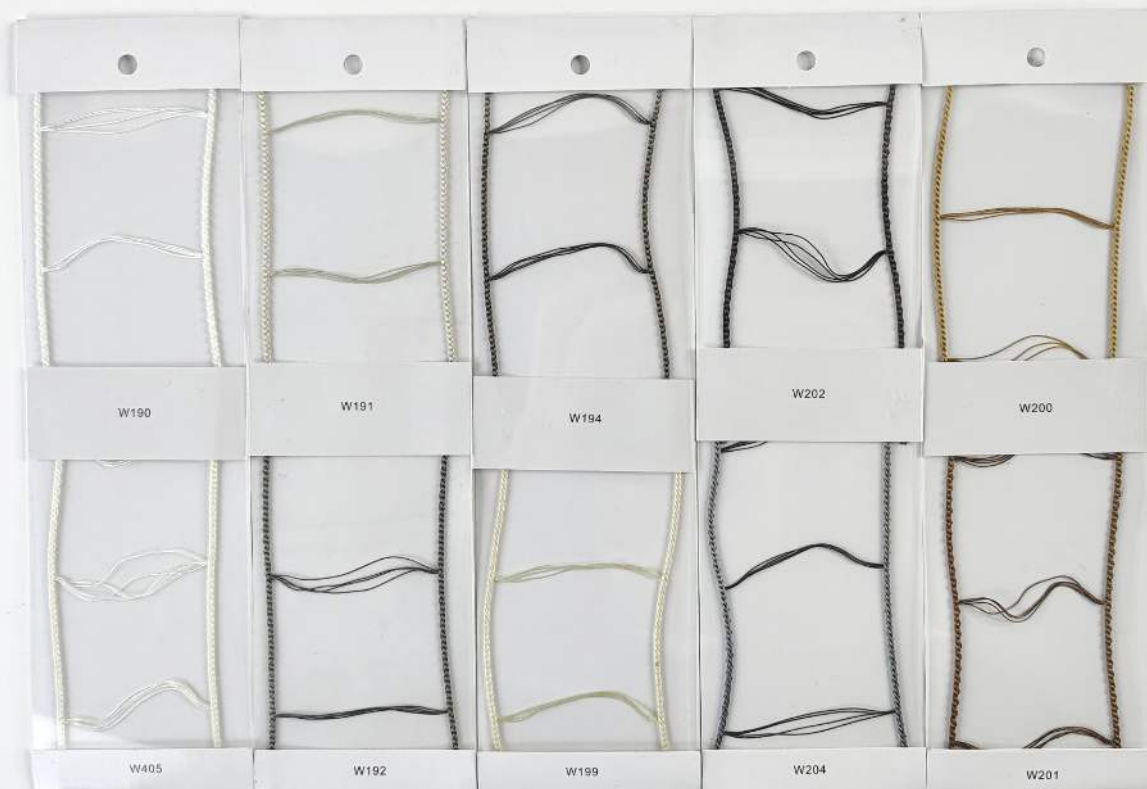
W893



W920



普通梯带常规颜色 19 个 Ladder string color 19 PCS



宽布梯带颜色 27 个 25mm Ladder string color 27 PCS



拉绳常规颜色 17 个 Pull cord color 17 PCS

		
W207	W405	W199
		
W191	W192	W194
		
W204	W200	W201





W202



HS010



W891



W893



W868



TS38



W208



W206

拉绳分离器常规颜色 8 个 Cord release device color 8 PCS



拉环/下扣颜色 26 个(匹配叶片颜色) Tassel & button color 26 PCS (match slats)





W190



W920



W405



W19201



W19202



W19203



W19204



W19205





HS010



GW002



W893



W891



W868



W19301



W19302



W19303



W19304



W19401



W19402



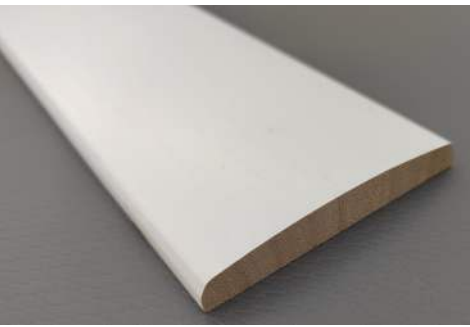






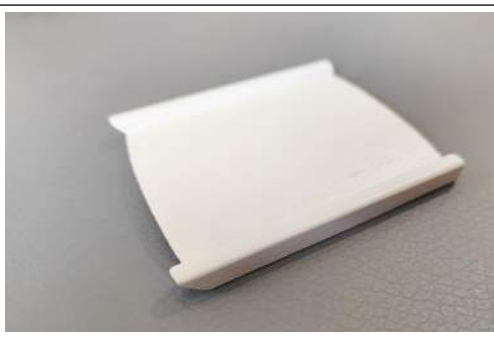

W19403



W19404

## 木质定制百叶帘制规 **Customized Wood blinds Regulations**

	<p>叶片尺寸 : 50mm/63mm      Slats size:50mm/63mm          厚度是:3mm                      Thickness: 3mm          最大长度: 覆盖色叶片最长 3 米, 染色/印刷/拉丝叶片最长 2.4 米.          Max Length : Painted color is 3000mm, Stained/Printed /Brushed color is 2400mm          误差范围: ±0.1mm              Error range: ±0.1mm</p>
	<p>1 封板宽度 (Plane) : 70mm      1 Valance Width:70mm          厚度是:10mm                      Thickness:10mm          误差范围: ±0.2mm              Error range: ±0.2mm</p>
	<p>2 封板宽度 (D) : 70mm              2 Valance Width:70mm          厚度是:10mm                      Thickness:10mm          误差范围: ±0.2mm              Error range: ±0.2mm</p>
	<p>3 封板 (B) 宽度: 63.5mm              2 Valance Width:63.5mm          厚度是:6.5mm                      Thickness:6.5mm          误差范围: ±0.2mm              Error range: ±0.2mm</p>
	<p>1 下轨 (T) 宽度: 48.7mm              1 Bottom Width:48.7mm          高度是:16mm                      Height:16mm          误差范围: ±0.5mm              Error range: ±0.5mm</p>

	<p>2 下轨 (H) 宽度: 50.8mm      2 Bottom Width:50.8mm  高度是:16mm                      Height:16mm  误差范围: ±0.5mm              Error range:±0.5mm</p>
	<p>3 下轨 (Square) 宽度: 50.8mm      3 Bottom Width:50.8mm  高度是:16mm                      Height:16mm  误差范围: ±0.5mm              Error range:±0.5mm</p>
	<p>封板转角有需要的时候加入，转角长度 78mm。  Add Valance corners if there needed  Valance corner length :78mm.</p>
	<p>50 高轨 宽 57mmx 高 52mmx 厚度 0.5mm  50 叶片&amp;63 叶片通用。  总计 10 个颜色，匹配叶片颜色。上轨比叶片短 10mm。  50 High top rail W57*H52*T0.5mm  50mm&amp;63mm slats both available.  Total of 10 colors, matched with slats colors.  The top rail is 10mm shorter than the slats.</p>
	<p>端盖只有白色  End cap just white color</p>





封套匹配高轨颜色，中托匹配封套颜色。

Box Bracket match the color of top rail and center bracket match the color of box bracket.



上轨中托使用数量 Center Bracket used:

帘宽度 Blinds Width	中托 Center Bracket	3.5*25 螺丝 Screw
Width < 1200mm	0	0
1200mm < Width < 1800mm	1	3
1800mm < Width < 2400mm	2	6



定制帘普通梯带:

50 叶片使用 54mm\*44.8mm 梯带

50.8mm slats use size: 54mm(space width)x44.8mm(space hight)



定制帘宽布梯带:

50mm 的宽布梯带是 25\*44.8\*54mm

50 slats used 25\*44.8\*54mm.

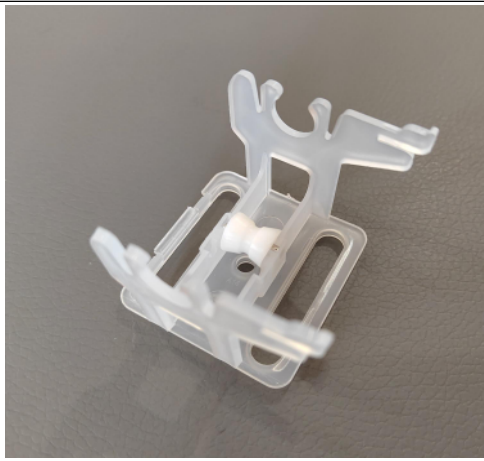


普通拉绳系统: 锁具和欧姆都使用 1.8mm 拉绳。

电动系统, 循环系统, 边孔百叶欧姆使用 1.2mm 拉绳。

String system: Both locks and OM use 1.8mm pull rod.

Electric system/circulation system/ Side hole blinds : OM use 1.2mm pull rope.



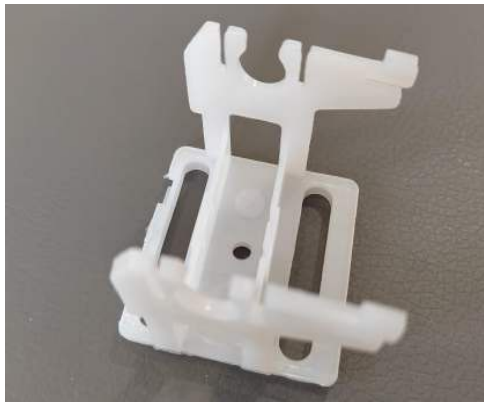
50mm 高轨有芯固定座

用在拉绳孔位处。例如：五梯三拉使用 3 个有芯固定座。

50mm high rail Coreless drum support:

Use on the position of the pull rope.For example:

Blinds is 5 String&3 pull rope,used 3 Pulley drum support.



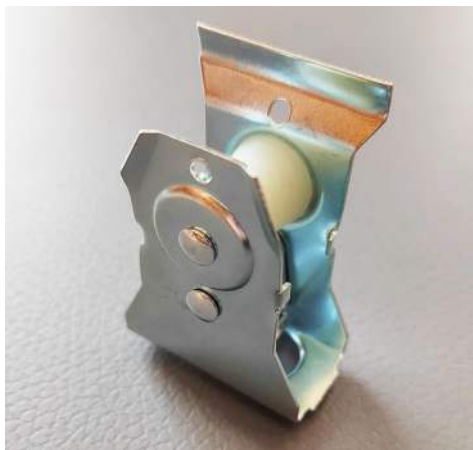
50mm 高轨无芯固定座:

用在无拉绳孔位处。例如：五梯三拉使用 2 个有芯固定座。

50mm high rail Coreless drum support:

Use on the position of the pull rope.For example:

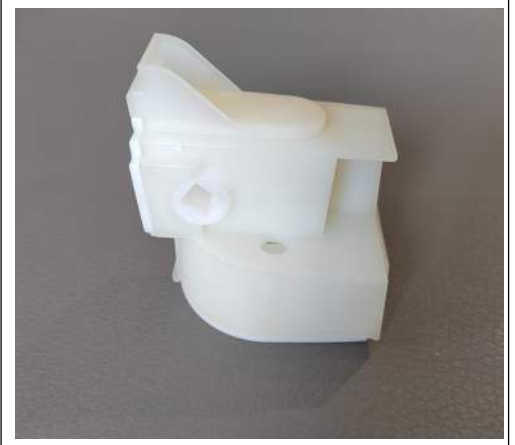
5 String&3 pull rope blinds,used 2 Coreless drum support.



铁锁具  
Iron Lock



船型锁具  
Boat Lock



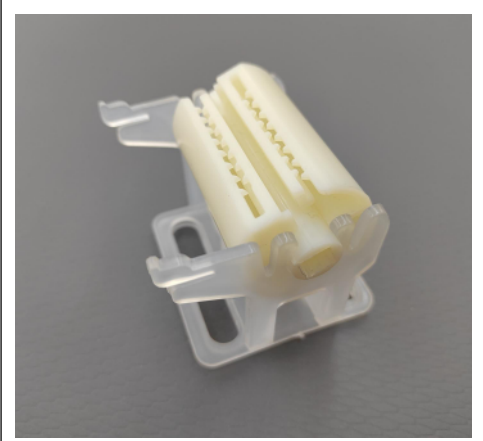
四角封闭式 OM  
Enclosed tiltor /OM



四角铁条 6\*6  
Bar Tron



梅花片  
Ring stopper



固定器+固定座  
Drum& Drum Support





普通下扣  
Bar Tron  
Match slats color



宽布梯带下扣 (匹配叶片颜色)  
Bar Tron  
Match slats color



拉环 (匹配叶片颜色)  
Tassel  
Match slats color



拉绳分离器  
Cord release device  
Match slats color



叶片夹 Slats Clip  
(Only Ladder string use)



单孔双牛角  
Rope cleat



铁封板挂钩  
Metal Valance Clip



封板转角连接器  
Valance connector

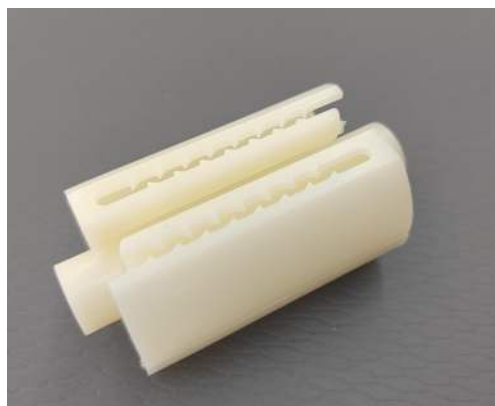


磁吸封板挂钩  
Magnet valance clips

# 拉绳系统 Cord system



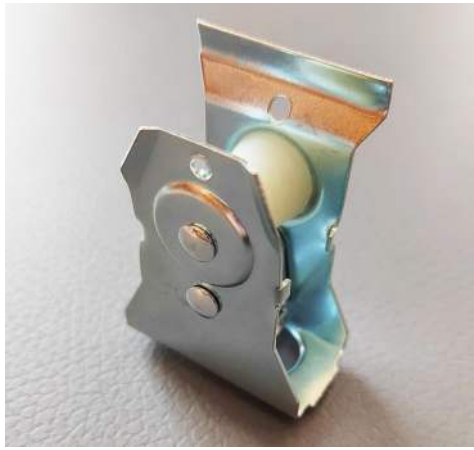
固定座  
String roll base



固定器  
String roll



四角铁条  
4 side Bar iron



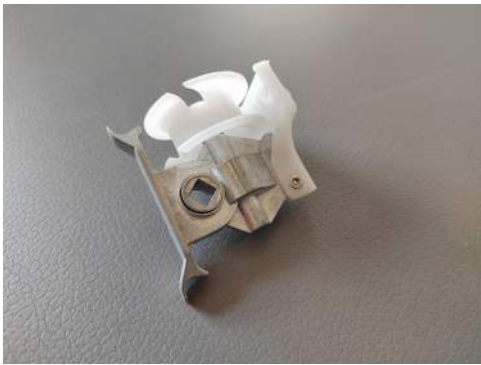
铁锁具  
Iron Lock



船型锁具  
Boat Lock



四角封闭式 OM  
Enclosed tiltor /OM



50mm OM-2

## 转棒拉绳系统 Wand Cord system



1 拉绳转棒系统，只把拉绳欧姆改为转棒式欧姆，其他配件和 50 高轨拉绳系统一样。

Wand system,just change Wand OM,other is same to cord system.

2 幅宽大于 600mm，拉绳和转棒可以在一侧。

When Width is more than 600mm,cord and wand can be one side.

3 转棒只有白色和棕色。

Wand just white and Brow



## 边孔系统 Side hole system



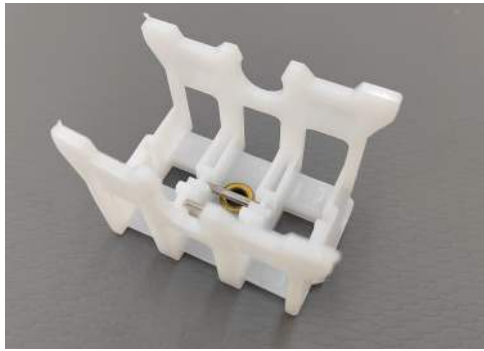
1 边孔用 50 低轨，6 角铁欧姆，6 角铁条，船型锁具。

Side hole used 50 low rail. Hexagonal Iron bar and Ship type lock

2 边孔用 1.2mm 拉绳，双耳梯带。其他和普通拉绳系统一样。

Side hole system use 1.2mm rope, Double ear ladder strap, others are same to standard rope system.

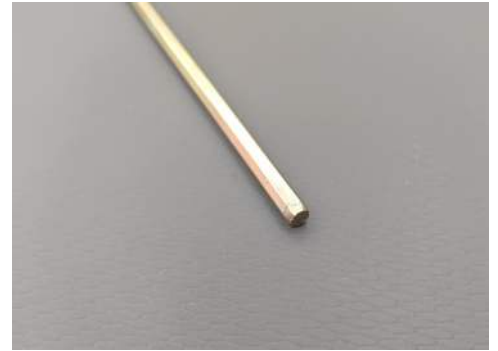
# 无拉系统 Cordless system



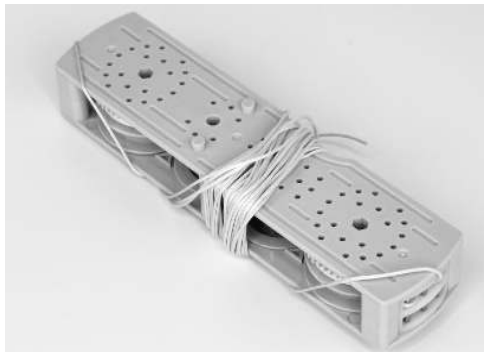
固定座  
String roll base



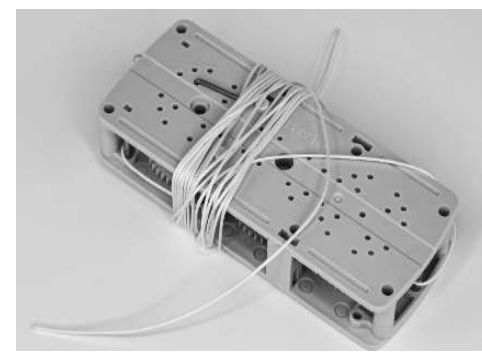
固定器  
String roll



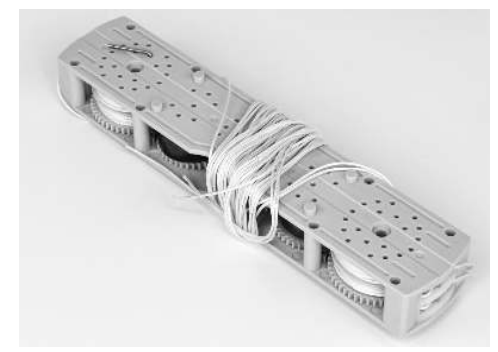
六角铁条  
Hexagonal Bar iron



EF 机构盒  
EF Module



ES 机构盒  
ES Module



EW 机构盒  
EW Module



PVC 转棒式 OM  
Tiltor for PVC wand blinds



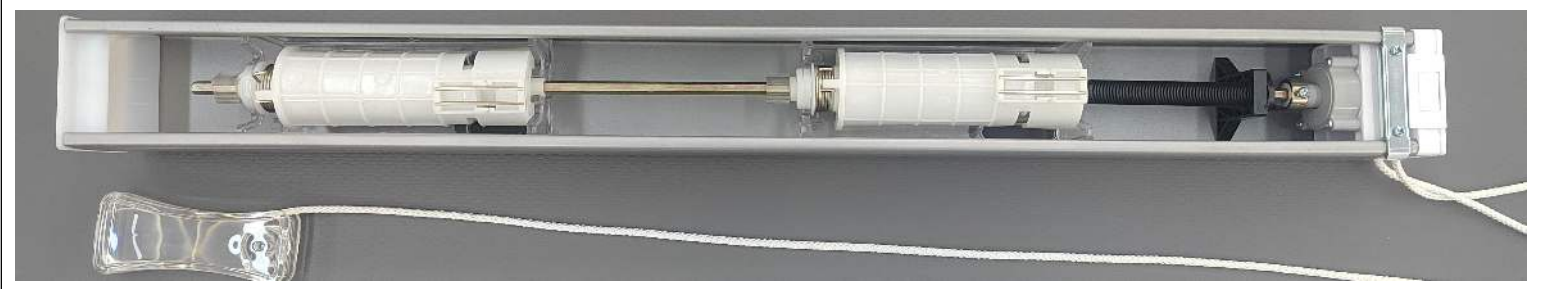
机构盒固定器  
Module holder

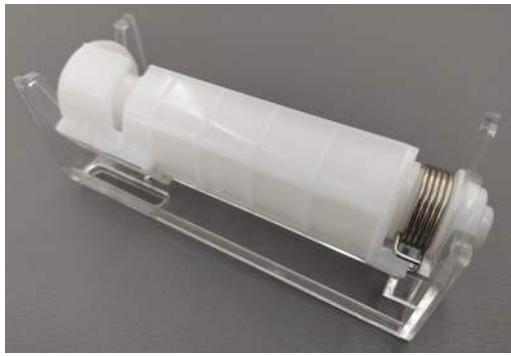


C 型扣  
Rod Stopper



## 循环系统 Chain system

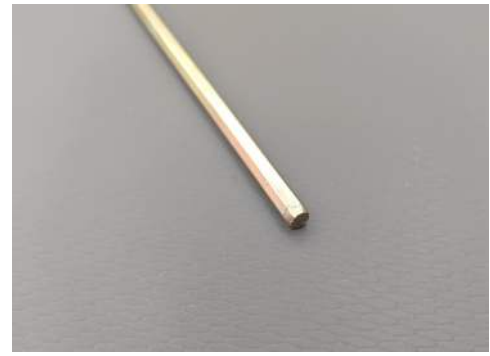




卷绳器



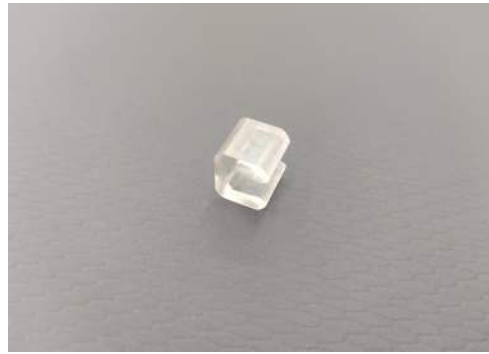
限位器



六角铁条  
Hexagonal Bar iron



拉珠 (1 个色) 周长 3180mm  
Bead rope (1 color ,  
Perimeter 3180mm)



C 型扣  
Rod Stopper



透明手柄  
Transparent handle



六角孔制头  
Rotator



W190



W405



TS38



GW002



HS010



W891



W893



W208

3.6mm 循环拉绳  
3.6mm Loop pull rope

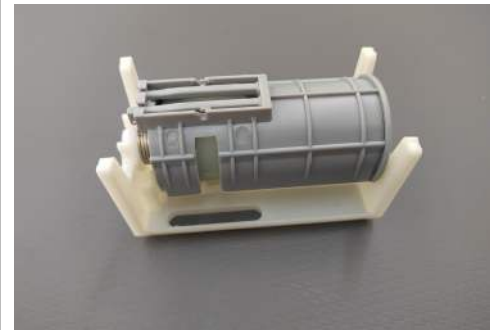
# 电动系统 Motor system



杜亚电机  
DOOYA Motor



奥科电机  
A-KO Motor



卷绳器



转棒连接器



1.2mm rope



电机卡座

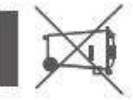
电动定制帘：定制款的电机可以做到幅宽 2.4 米，垂长可以做到 3 米。再大的垂长可以做，但是在窗帘下降的时候在 3 米以上的区间会有断断续续的停留，因为超过 3 米的垂长的绳子是卷在第一圈绳子的上面。超过 3 米的不参与质保。

Customized motor blinds: The customized motor can achieve a width of 2.4 meters and a vertical length of 3 meters. No matter how long the drape is, it can be done, but there will be intermittent stops in the range of more than 3 meters when the blinds is descending, because the rope with a drape length of more than 3 meters is coiled on top of the first circle of rope. Items exceeding 3 meters are not covered by warranty.



## SAFETY NOTE

1. This appliance can be used by children aged from 8 years and above and persons with reduced physical, sensory or mental capabilities or lack of experience and knowledge if they have been given supervision or instruction concerning use of the appliance in a safe way and understand the hazards involved.
2. Children shall not play with the appliance.
3. Cleaning and user maintenance shall not be made by children without supervision.
4. If the supply cord is damaged, it must be replaced by the manufacturer, its service agent or similarly qualified persons in order to avoid a hazard.
5. **WARNING:** the drive shall be disconnected from its power source during cleaning, maintenance and when replacing parts.
6. The instructions shall state that the A-weighted emission sound pressure level of the drive is equal to or less than 70 dB(A), e.g. by writing LpA ≤ 70 dB(A).
7. The mass and the dimension of the driven part shall be compatible with the rated torque and rated operating time.
8. The type of driven part the drive is intended for.
9. **WARNING:** Important safety instructions. It is important for the safety of persons to follow these instructions. Save these instructions.
10. Do not allow children to play with fixed controls. Keep remote controls away from children.
11. Frequently examine the installation for imbalance and signs of wear or damage to cables and springs. Do not use if repair or adjustment is necessary.
12. Watch the moving shutter and keep people away until the shutter is completely closed.
13. **WARNING:** Important safety instructions. Follow all instructions, since incorrect installation can lead to severe injury.
14. Before installing the drive, remove any unnecessary cords and disable any equipment not needed for powered operation.



## DV40AF/S

### Instruction | A-01



#### Features:

- Electronic Limit
- Self Protection
- Limit Fine Adjustment
- Speed Regulation
- Built-in Receiver
- Jog & TR
- Program Station
- Radio Lock
- Switch Direction
- Preset Stop Position
- Low Power Consumption
- Reset to Factory Mode

#### Fields of Application



The motor is suitable for motorization of venetan blinds.

#### Specifications

Working Temperature: DC - +30°C	Rated Frequency: 50/60Hz
Rated Voltage: 2V	Maximum Running Time: 6 minutes

\* For more motor models and specific torque, please refer to the catalogue.

#### Motor Installation



#### Changing Instructions



During operation, motor will stop running when the voltage is lower than 8.0V and it will resume again when the voltage is greater than 8.5V.  
During operation, motor will stop buzzer sounds when the voltage is lower than 7.0V and it will resume again when the voltage is greater than 7.5V.  
When the motor is running continuously, when the voltage is lower than 10.5V, the buzzer sounds 10 times for low pressure alarm.

#### Caution

1. Do not expose motor to humid or extreme temperature conditions.
2. Do not drill into motor.
3. Do not cut the antenna and keep it clear from metal objects.
4. Do not allow children to play with the device.
5. If power cable or connector is damaged, do not use.
6. Ensure correct down and drive motor are used.
7. Ensure power cable and seal is clear and protectors from mounting parts.
8. Cable routed through walls shall be properly isolated.
9. Motor is to be mounted in horizontal position only.
10. Before installation, remove unnecessary cords and disable equipment not needed for powered operation.
11. Installation and programming to be performed by a qualified professional, use of modification outside the scope of the instruction may void warranty.

#### Important Safety Instructions To Be Read Prior To Operation.

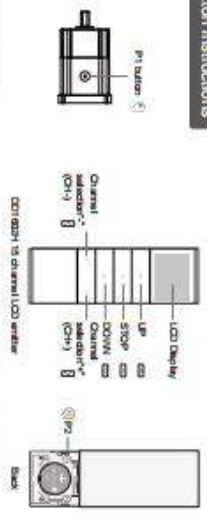
#### Setting Notice

Please read following points of attention carefully before setting.

1. Don't operate motor when low voltage alarm.
2. Operation:
  - ① The valid interval time of the buttons is within 10S. If there is no operation within 10S, the entry will exit the present setting.
  - ② The motor will jog and keep as that, it's operate after the jog and keep.
3. Set the limit position:
  - ① After the upper / lower limit setting, and the upper / lower limit position (left / at the same position).
  - ② After the limit setting, with power off and memory function.
  - ③ Just device will clear all their memory.
  - ④ If will continue setting when program there is no operation for 2 minutes.
  - ⑤ If the entire list, please set up again with the new entry.
  - ⑥ One motor can store maximum 30 channels, after fully stored, if pair new channels, only the last one will be covered circularly.



## Button Instructions



1. **Check Operation:** Press P1 button once and hold it for 2 seconds. The motor will start to rotate. Press P1 button again and hold it for 2 seconds. The motor will stop. Press P1 button once and hold it for 2 seconds. The motor will start to rotate. Press P1 button again and hold it for 2 seconds. The motor will stop. Press P1 button once and hold it for 2 seconds. The motor will start to rotate. Press P1 button again and hold it for 2 seconds. The motor will stop.
2. **Factory/Reset:** Press P1 button for 25s (2 steps), release button and long beep once, within 10s, the motor will reset to factory mode.
3. **Release/Stop:** Press and hold P1 button for 2s, the motor will stop. Release button and long beep once, within 10s, the motor will start to rotate. Press P1 button again and hold it for 2 seconds. The motor will stop.
4. **Speed/Direction:** Press and hold P1 button for 2s, the motor will stop. Release button and long beep once, within 10s, the motor will start to rotate. Press P1 button again and hold it for 2 seconds. The motor will stop.
5. **Reverse/Factory/Reset:** Press and hold P1 button for 25s (2 steps), release button and long beep once, within 10s, the motor will reset to factory mode. Press and hold P1 button for 25s (2 steps), release button and long beep once, within 10s, the motor will start to rotate. Press P1 button again and hold it for 2 seconds. The motor will stop.

**Essential Settings**  
The steps in factory mode must be completed to ensure proper operation.

## Factory mode

### 1 Pairing

1. **Pairing:** Press P1 button for 25s (1 step), release button and long beep once, within 10s, press STOP for 2s (2 steps and 3 beeps), the motor has been paired successfully.
2. **Release/Stop:** Press and hold P1 button for 2s, the motor will stop. Release button and long beep once, within 10s, the motor will start to rotate. Press P1 button again and hold it for 2 seconds. The motor will stop.

### 2 Switch Rotating Direction (Optional)

1. **Press UP:** The motor runs downward. Try below to switch direction.
2. **Press and hold UP and DOWN buttons simultaneously for 25s:** Press and hold UP and DOWN buttons simultaneously for 25s (2 steps), release button and long beep once, within 10s, the direction has been switched successfully.
3. **Press and hold UP and DOWN buttons simultaneously for 25s:** Press and hold UP and DOWN buttons simultaneously for 25s (2 steps), release button and long beep once, within 10s, the direction has been switched successfully.

### 3 Upper and Lower Limits Setting

1. **Set upper limit:** Press UP for 25s, operate the motor to desired upper position, press and hold UP and STOP buttons simultaneously for 25s (2 steps), the upper limit is set.
2. **Set lower limit:** Press DOWN for 25s, operate the motor to desired lower position, press and hold DOWN and STOP buttons simultaneously for 25s (2 steps), the lower limit is set.

\*To clear the limit setting status, before you finish the limit setting, then the motor will take the previous limits if have. After the limits have been set successfully, the motor will enter the user mode.

## User mode

### 1 Add A Preferred Position

1. **Set preferred position:** Check both upper and lower limits are set. Operate the product to desired position, press P2 (1 log and 1 beep), press STOP (2 steps and 3 beeps), the preferred position is set.
2. **Remove preferred position:** Press P2 (1 log and 1 beep), press STOP (2 steps and 3 beeps), the preferred position is deleted.

### 2 Jog Mode & Running Mode Switch

1. **Jog Mode:** Press and hold UP and DOWN buttons simultaneously for 5s (1 log), press STOP (2 steps and 3 beeps), switch to jogging mode. If motor is running, press UP or DOWN once, the motor will stop jogging. If press more than 2 seconds, the motor will be override running.
2. **Running Mode:** Press and hold UP and DOWN buttons simultaneously for 5s (1 log), press STOP (2 steps and 3 beeps), switch to running mode. If motor is running, press UP or DOWN once, the motor will stop running. If press more than 2 seconds, the motor will be override running.

### 3 Adjust Limits

1. **Adjusting the upper limit:** Press and hold UP and STOP buttons for 5s (1 log and long beep once), operate the product to desired new upper limit position, press and hold UP and STOP buttons for 25s (2 steps and 3 beeps), the new upper limit is programmed successfully.
2. **Adjusting the lower limit:** Press and hold DOWN and STOP buttons for 5s (1 log and long beep once), operate the product to desired new lower limit position, press and hold DOWN and STOP buttons for 25s (2 steps and 3 beeps), the new lower limit is programmed successfully.

### 4 Pair Upper/Additional Encoder

1. **Method one:** Press P2 (1 log and 1 beep) and P2 (1 log and 1 beep) on existing encoder, press P2 on new encoder to add (2 steps and 3 beeps), new encoder is paired to the motor.
2. **Method two:** Press P2 (1 log and 1 beep) on existing encoder, press P2 on new encoder to add (2 steps and 3 beeps), new encoder is paired to the motor.

### 5 Speed Regulation

1. **Acceleration setting:** Press P2 (1 log and 1 beep), UP (1 log and 1 beep), UP again (2 steps and 3 beeps), the motor running speed is accelerated.
2. **Deceleration setting:** Press P2 (1 log and 1 beep), DOWN (1 log and 1 beep), DOWN again (2 steps and 3 beeps), the motor running speed is decelerated.

### 6 Quick Index

1. **Pairing:** Press P1 button for 25s (1 step), release button and long beep once, within 10s, press STOP for 2s (2 steps and 3 beeps), the motor has been paired successfully.
2. **Release/Stop:** Press and hold P1 button for 2s, the motor will stop. Release button and long beep once, within 10s, the motor will start to rotate. Press P1 button again and hold it for 2 seconds. The motor will stop.

## Method two

1. **Pairing:** Press P2 (1 log and 1 beep) and P2 (1 log and 1 beep) on existing encoder, press STOP on new encoder for 25s to add (2 steps and 3 beeps), new encoder is paired to the motor.
2. **Release/Stop:** Press and hold P1 button for 2s, the motor will stop. Release button and long beep once, within 10s, the motor will start to rotate. Press P1 button again and hold it for 2 seconds. The motor will stop.

\*If a new encoder is added, the encoder should be carried out when there is a limit. After the setting of the motor will be kept after adjusting the new encoder.

### 5 Speed Regulation

1. **Acceleration setting:** Press P2 (1 log and 1 beep), UP (1 log and 1 beep), UP again (2 steps and 3 beeps), the motor running speed is accelerated.
2. **Deceleration setting:** Press P2 (1 log and 1 beep), DOWN (1 log and 1 beep), DOWN again (2 steps and 3 beeps), the motor running speed is decelerated.

\*If a new encoder is added, the encoder should be carried out when there is a limit. After the setting of the motor will be kept after adjusting the new encoder.

## Quick Index

Setting	Steps
1. Pairing	P1 (hold down 25s) → Stop (hold down 2s)
2. Switch Rotating Direction	UP → Down (hold down 25s)
3. Upper and Lower Limits Setting	UP (hold down 25s) → UP → Stop (hold down 2s) Down (hold down 25s) → Down → Stop (hold down 2s)
4. Add/Remove/Pair/Unpair Encoder	UP → Stop → Stop
5. Jog Mode & Running Mode Switch	UP → Down (hold down 5s) → Stop
6. Adjust Limit	UP → Stop (hold down 5s) → UP or Down → UP → Stop (hold down 2s) Down → Stop (hold down 5s) → UP or Down → Down → Stop (hold down 2s) UP → Stop (hold down 5s) → UP → Stop (hold down 2s) DOWN → Stop (hold down 5s) → DOWN → Stop (hold down 2s)
7. Pair Upper/Additional Encoder	P2 (hold down 25s) → Stop (2 steps and 3 beeps) P1 (hold down 25s) → Stop (2 steps and 3 beeps)
8. Speed Regulation	UP → UP → UP DOWN → DOWN → DOWN

## Troubleshooting

Issue	Possible Cause	Solution
The motor does not respond	Power Failure, Overcurrent, Overload, Encoder Failure, Motor Failure	Check power supply and connections, allow wiring to cool, check motor cable, check encoder connection, check motor status
The motor has no response	Motor Failure, Encoder Failure, Power Failure, Motor Failure	Check power supply and connections, allow wiring to cool, check motor cable, check encoder connection, check motor status
The motor runs in the wrong direction	Encoder Failure, Motor Failure, Power Failure, Motor Failure	Check power supply and connections, allow wiring to cool, check motor cable, check encoder connection, check motor status
The motor runs too fast	Encoder Failure, Motor Failure, Power Failure, Motor Failure	Check power supply and connections, allow wiring to cool, check motor cable, check encoder connection, check motor status
The motor runs too slow	Encoder Failure, Motor Failure, Power Failure, Motor Failure	Check power supply and connections, allow wiring to cool, check motor cable, check encoder connection, check motor status
The motor runs in the wrong direction	Encoder Failure, Motor Failure, Power Failure, Motor Failure	Check power supply and connections, allow wiring to cool, check motor cable, check encoder connection, check motor status
The motor runs too fast	Encoder Failure, Motor Failure, Power Failure, Motor Failure	Check power supply and connections, allow wiring to cool, check motor cable, check encoder connection, check motor status
The motor runs too slow	Encoder Failure, Motor Failure, Power Failure, Motor Failure	Check power supply and connections, allow wiring to cool, check motor cable, check encoder connection, check motor status



## PVC 定制帘 Customized PVC blinds

50mm 12 个颜色

50mm 12 PCS Color

63mm 2 个颜色

63mm 2 Color



B 封板 B Valance



工型下轨 H Bottom



尺寸同木质 Size same to Paulownia guide  
 匹配叶片颜色 Valance and bottom match slats color

拉环 Tassel



下扣 Button



梯带拉绳和木头系列通用

Ladder and rope same to wood series

1 PVC 定制帘最大幅宽：2700mm

PVC blinds Max length is :2700mm

## 五金包 Hardware bag



气柱五金包

Air column hardware package

配件名称 Accessories Name	款式 Type	宽度 Width	数量 QTY
牛角 Rope cleat			1
牛角用螺丝 Cleat Screw	3.5*25mm		1
铁封板挂钩 Metal Valance Clip			2
封板转角连接器 Connector			2
封板挂钩螺丝 Clip Screw	3*6mm		4
封套 Box Bracket			2
封套用螺丝 Box Bracket Screw	3.5*25mm		8
中托/螺丝/膨胀管 Center bracket/Screw/Expansion Tube			
帘宽度 Blinds Width	中托 Center bracket	螺丝 Screw	膨胀管 Expansion Tube
<1200mm	0	0	9
1200mm<W≤1800mm	1	3	12
1800<W<2400mm	2	6	8

## 运输包装 Transport packaging

		
<p>五金单独包装或者放入上轨 Hardware bag or Put in high rail</p>	<p>1 百叶帘气泡布包装 1 Bubble plastic cloth pack</p>	<p>2 百叶帘气柱包装 2 Gas column wrapping</p>
		
<p>警示贴纸 Warning stickers</p>	<p>1 外箱 5 层瓦楞内箱 1 External packing 5 layer corrugated</p>	<p>2 蜂窝纸箱+护条外包装 2 Honeycomb cardboard box+ Protective strip pack</p>
		
<p>空运 Air freight Honeycomb carton</p>	<p>散货木箱展示 LCL-Wooden box</p>	<p>海运集装箱展示 Shipping container view</p>



**空运重量参考**  
**Air freight weight reference**

Description of goods	PC/CTN	SIZE:(INCH)		CT N	蜂窝纸板加纸护角重量+尺寸 Honeycomb cardboard+Add paper foot guards SIZE+G.W				G.W (KGS)
		Width (mm)	LENGHT (mm)		Length (mm)	Width (mm)	High (mm)	CBM	
WOODEN BLINDS	1PCS/1CT N	1730	2496	1	1890	360	160	0.109	11.65
		943	2496	1	1090	350	160	0.061	6.85
		1418	2491	1	1560	300	160	0.075	9.45
		940	2491	1	1100	350	160	0.062	6.80
		1567	1326	1	1820	270	160	0.079	8.30
		980	2501	1	1200	350	160	0.067	7.35
		1820	2501	1	1950	350	160	0.109	12.80
		1820	2496	1	1980	350	160	0.111	12.75
		1570	1296	1	1800	270	160	0.078	8.40
		1630	1430	1	1820	290	160	0.084	8.25
TOTAL				10				0.834496	92.6

通常航空公司会按照按照 1 立方=167 公斤计算重量  
Usually, airlines calculate based on 1 cubic meter=167 kilograms

**木箱海运参考 Wooden crate sea freight reference**

木箱尺寸 Wooden Box size	窗帘数量 Blinds number (m <sup>2</sup> )	木箱重 Weight	备注 Note
2430mmX1230mmx 1470mm	130.842	510kg	木箱加收附加费 Additional fee will be charged for wooden crates

## 下单表格 Order Form

	1	2	4	5	6	7	8	9	10	11	12	
IT E M	房间 Room	数量 Qty.	颜色 Colour	订单 窗宽 Width	订单窗 高 Height	下轨形 状 Bottom Design	上轨颜 色 Headrai l Finish	叶片尺 寸 Slat Size	梯带类型 Ladder Choices	梯带颜 色 Ladder Colour	上轨系统 Headrail System	平方 m2
1												
2												
3												
4												
5												
6												
7												
8												
9												
10												

	13		14	15	16	17	18	19	20
IT E M	Control Location 控制方式		封板类 型 Valance Design	封板转 角 Valance Return	封板长 度 Lenght valence	跟哪个 对齐 Match with item	拉绳分离器 颜色 Acorn/child safety device colour	拉绳长 度 Cord Length	特殊说明 SPECIAL INSTRUCTION
	翻转 Tilt Location	升降 Lift Location							
1									
2									
3									
4									
5									
6									
7									
8									
9									
10									

## 生产特别注意事项 **Special notice for Production**

1. 木帘制作尺寸包含端盖和封套

The blinds make size include the box brackets, headrail end caps.

2. 上轨比叶片短 10mm (如 S10) Headrail short 10mm than slats

3. 封板和叶片一样长 Valance and slats same length

4. 木百叶帘覆盖色最宽做到 3 米

Wooden blinds most length 3000mm for painted colors.

百叶帘超过 3 米不参与质保

Blinds height more than 3000mm will out of warranty.

Finished blinds tolerance 0-10mm

### 交期 **Lead Time**

收到货款后 7 天完工

7 days for production after payment arrive.

## 质保 Warranty

1 质保时间：2 年

Factory offer 2 years warranty for whole Blinds system.

2 质保范围：包含油漆黄变, 开裂;木材的自然断裂、指接、拼接痕、变形。

Get warranty include painting turn yellow, the natural crack; gaps for finger jointed & splice, natural deformation in 2 years from delivery factory.

3 对于以下的情况造成的问题, 不在质保条款保护范围之内:

There is no warranty in below conditions:

①使用在高温或高湿的环境导致木材开裂或 者变形;

.Wood crack or deformation as installed in high temperature or high humidity environmental (unless PVC Blinds).

②客户安装, 存放及运输不当导致的问题。

As customer install , stock and transport unsuitable lead to products broken.





## Find Us

Blinds website: [www.blinds-supplier.com](http://www.blinds-supplier.com)

Shutter website: [www.shutter-suppliers.com](http://www.shutter-suppliers.com)

Shade website: [www.shadesupplier.com](http://www.shadesupplier.com)

Total website address: [www.huashengindustry.com](http://www.huashengindustry.com)



**If you click to view our website and social media, you are becoming increasingly interested in us, we greatly welcome you to visit our factory at any time !**

**Please check our factory address: No.8 industry zone Zhuangzhai Town Heze City Shandong Province, China      Tel: 86-0530-6219566**

